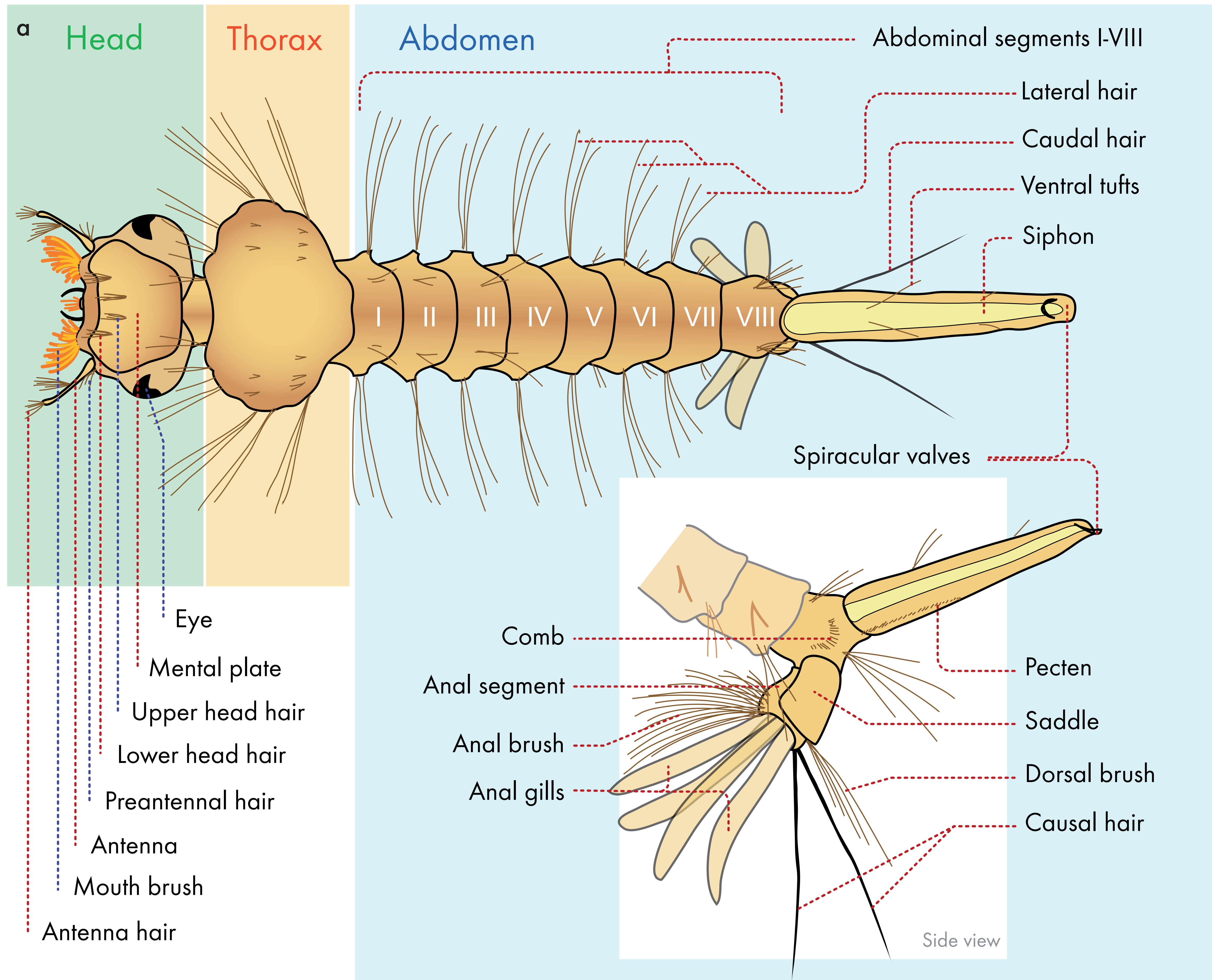


# Anatomy of a mosquito larva



*Culex restuans*



b



Larvae of *Culex* mosquitoes. As seen on the picture, larvae make dense groups in standing water.

Citation: Ries, C. & F. Schaffner, 2019. Anatomy of mosquito larva: *Culex restuans* THEOBALD, 1901. Poster for the 12th edition of the Science Festival from 7-10 November 2019. Luxembourg: Musée national d'histoire naturelle (MNHNL), Direction de la santé (MS), Département de l'environnement (MECDD).

Illustrations credit: a. <https://commons.wikimedia.org> | b. [www.shutterstock.com](http://www.shutterstock.com)  
 For more information about mosquitoes in Luxembourg, see <https://mosquitoes.lu>  
 Layout: Karin Scholtes, Luxembourg National Museum of Natural History (MNHNL).



LE GOUVERNEMENT  
DU GRAND-DUCHÉ DE LUXEMBOURG  
Ministère de la Santé

Direction de la santé



LE GOUVERNEMENT  
DU GRAND-DUCHÉ DE LUXEMBOURG  
Ministère de l'Environnement, du Climat  
et du Développement durable

